



2022 Concentrated Inspection Campaign on STCW questions 6- 10

Paris MoU



on Port State Control

CODE OF GOOD PRACTICE FOR PORT STATE CONTROL OFFICERS

Apply the procedures of PSC and the convention requirements in a consistent and professional way and interpret them pragmatically when necessary

Paris MoU



on Port State Control

Q6: Do the records for hours of rest indicate compliance with the requirements?

- Minimum rest of 10 / 24-hour period.
- Minimum rest of 77 / 7-day period.
- On call - adequate compensatory rest period
- Minimum hours of rest may be divided into no more than two periods in any 24-hour period, one of which must be at least six hours; the interval between consecutive periods of rest must not exceed 14 hours.
- Exceptions should be agreed by the STCW Party and covered by a collective agreement which has been registered or authorized by the Flag State.

<https://www.myseatime.com/blog/detail/work-and-rest-hours-on-ships>

Paris MoU



on Port State Control

Q6: Do the records for hours of rest indicate compliance with the requirements?

- Deficiency code: 01308
- Convention reference: STCW Code Part A Regulation VIII para 1
- Suggested action: 17 before departure

Paris MoU



on Port State Control

Menti.com Question 6

Can a ship comply with the rest hour requirements with two watchkeeping officers?


Yes

No

Maybe

Q7 Do the watch schedules comply with the provisions of STCW?

- Shipboard working arrangements (MLC)
- Standardized format
- In working language and English
- Accessible
- Updated
- Used by officers and crew
- Designated personnel qualified.

 **Model format for a table of shipboard working arrangements¹**

Name of ship: _____ Flag of ship: _____ IMO number (if any): _____ Latest update of table: _____ () of () pages

The maximum hours of work or minimum hours of rest are applicable in accordance with: _____ (national law or regulation) issued in conformity with ILO's Seafarers' Hours of Work and the Manning of Ships Convention, 1996 (No. 180), and with any applicable collective agreement registered or authorized in accordance with that Convention and with the International Convention on Standards of Training, Certification and Watchkeeping for Seafarers, 1978, as amended (STCW Convention).²

Maximum hours of work or minimum hours of rest:³ _____

Other requirements: _____

Position/Rank ⁴	Scheduled daily work hours at sea		Scheduled daily work hours in port		Comments	Total daily work/rest ⁵ hours	
	Watchkeeping (from – to)	Non-watchkeeping duties (from – to) ³	Watchkeeping (from – to)	Non-watchkeeping duties (from – to) ³		At sea	In port

Signature of master: _____

¹ The terms used in this model table are to appear in the working language or languages of the ship and in English.
² See overleaf for selected extracts from ILO Convention 180 and the STCW Convention.
³ Delete as applicable.
⁴ For those positions/ranks that are also listed in the ship's safe manning document, the terminology used should be the same as in that document.
⁵ For watchkeeping personnel, the comments section may be used to indicate the anticipated number of hours to be devoted to unscheduled work and any such hours should be included in the appropriate total daily work hours column.

Paris MoU



on Port State Control

Q7 Do the watch schedules comply with the provisions of STCW?

- Deficiency code: 01306
- Convention reference: STCW Code Part A-VIII para 1.5 and 2
- Suggested action: 17 before departure

Paris MoU



on Port State Control

Q8* Are seafarers newly joined the vessel familiar with their specific duties that are relevant to their routine or emergency duties?

- Policies and procedures in place for familiarization
- Knowledgeable crew member designated to ensure that each newly employed seafarer receives essential information in a language the seafarers understands;
- Newly joined seafarers acquainted with ship-specific equipment, watchkeeping, safety, environmental protection, security and emergency procedures and arrangements
- Reasonable period of time.
- Muster List

The image shows a checklist document for 'PROMETHEUS MARITIME LTD.' titled 'SHIP FAMILIARIZATION CHECKLIST'. It includes fields for 'Name of Seafarer', 'Date', 'Type of Vessel', and 'Date of Joining'. Below these are several checklist items, many with checkboxes, covering topics like: understanding of duties, knowledge of emergency procedures, familiarity with equipment, and understanding of safety and environmental protection. At the bottom, there are signature lines for the seafarer and the designated crew member.

Paris MoU



on Port State Control

Q8* Are seafarers newly joined the vessel familiar with their specific duties that are relevant to their routine or emergency duties?

Deficiency Code: 04121

Convention Reference: STCW Code Part A-I/14

Suggested Action: 17/30

* **ground** for detention

Menti.com Question 8

How long is a '*reasonable period of time*' for new crew to be familiarised?

Q9*: Can the seafarers on board the vessel communicate effectively with each other in the working language of the vessel?

- Requirement for effective oral communication - SOLAS
- Observe the interaction and communication between crew members.
- Working language recorded in the ships logbook.
- Requirements
- To ensure effective crew performance in safety matters crewmembers should be able to understand and, where appropriate, give orders and instructions and report back in the working language that is recorded in the ship's log-book.
- Observe if the relevant personnel can communicate effectively.
- Foreign language



Paris MoU

on Port State Control

Q9*: Can the seafarers on board the vessel communicate effectively with each other in the working language of the vessel?

Deficiency code: 10136
Convention Reference: STCW Regulation I/R14
Suggested Action: 17/30
* **ground** for detention

Menti.com Question 9

“effective oral communication in accordance with chapter V, regulation 14, paragraphs 3 and 4 of the International Convention for the Safety of Life at Sea, 1974 (SOLAS)” means:

- a) To ensure effective crew performance in safety matters, a working language shall be established and recorded in the ship's log-book
- b) The company, or master, shall determine the appropriate working language
- c) Each seafarer shall be required to understand and, where appropriate, give orders and instructions and to report back in the working language
- d) All of these

Paris MoU

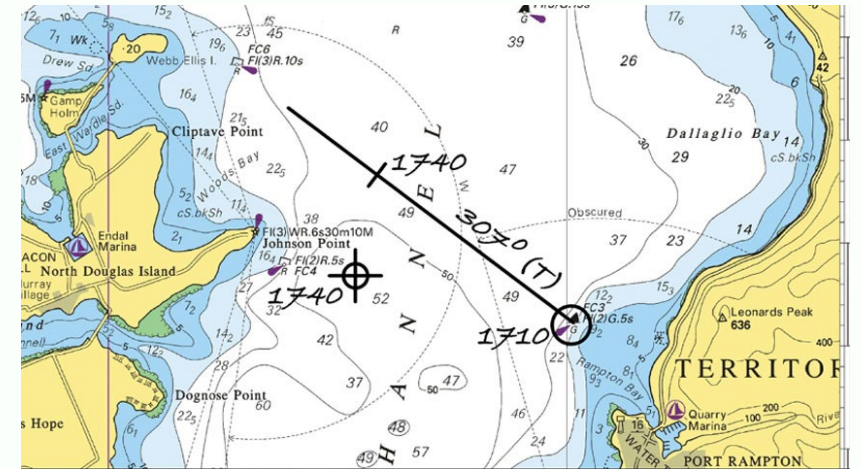


on Port State Control

Voyage Plans

Menti.com Question 10

What should a voyage plan cover?



Q10: Do the voyage plans cover the whole route from berth to berth?

Voyage plans covering the scheduled route should be set before each departure of the vessel from a port.

If there is no voyage plan available for the forthcoming voyage the PSCO should establish if there is a procedure for voyage planning.

Paris MoU



on Port State Control

Q10: Do the voyage plans cover the whole route from berth to berth?

Check

- Voyage plans approved by the master, and acknowledged by the OOW
- Restricted or confined waters the specific location method and frequency of positioning included voyage plan
- Voyage plan contains all the information needed for the intended voyage
- Routes clearly marked on the nautical charts/ECDIS
- Modifications recorded
- Familiarity of watchkeeping officers with the navigational equipment
- Unfamiliarity of equipment may indicate non-compliance with Question 8.

Paris MoU



on Port State Control

Q10: Do the voyage plans cover the whole route from berth to berth?

Deficiency code: 10127(Voyage or passage plan)

Convention Reference: STCW Code Part A-VIII/2

Suggested Action: 17

Paris MoU



on Port State Control

Questions?
